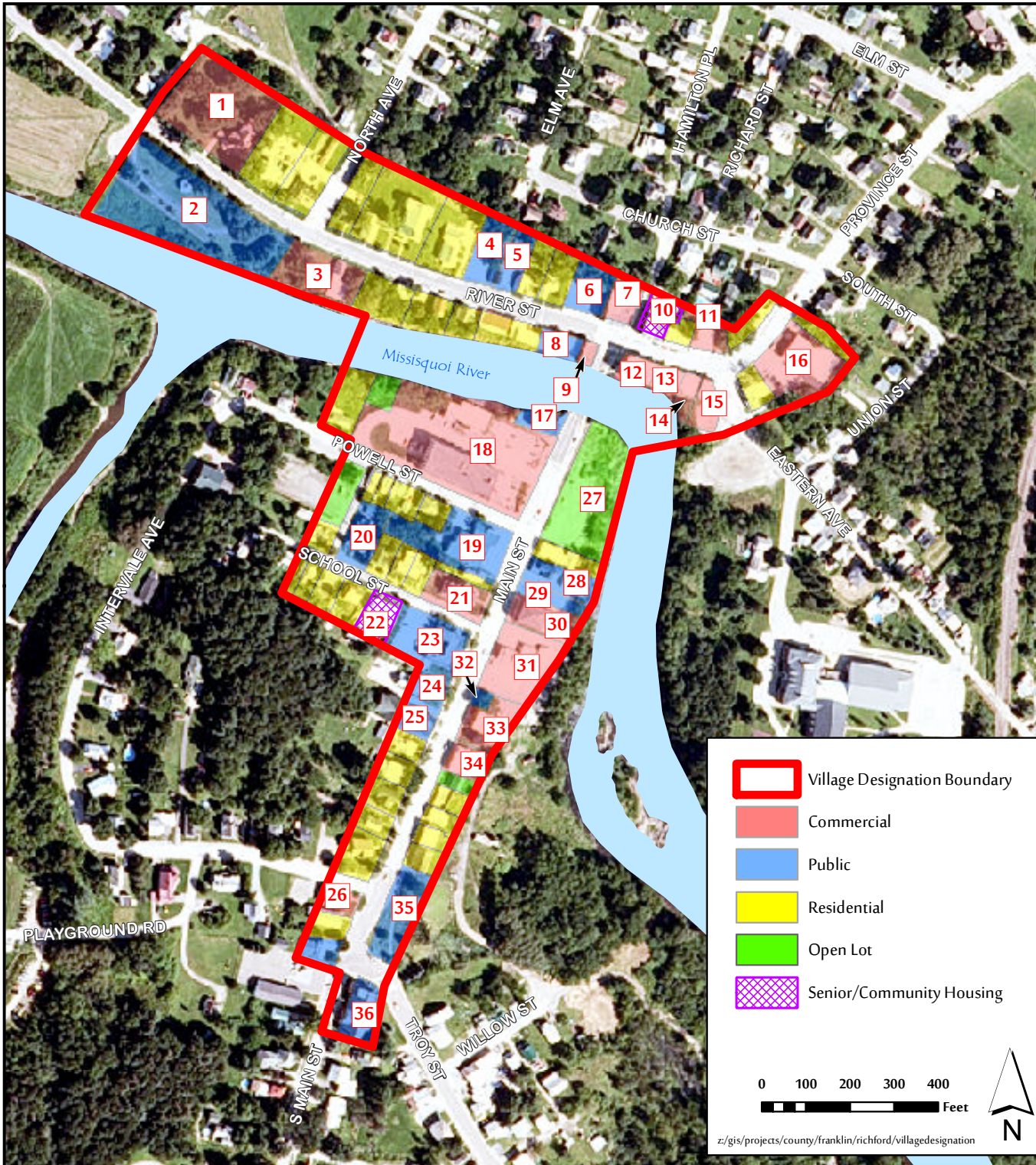


RICHFORD Village Center Designation



- | | |
|---|-----------------------------------|
| 1 Grey Gables Mansion B&B | 19 Emergency Service Building |
| 2 Davis Park | 20 First Baptist Church |
| 3 Lariviere House | 21 The Pink Lady |
| 4 Methodist Parsonage | 22 Ave Maria Community Care Home |
| 5 United Methodist Church | 23 Post Office |
| 6 Municipal Parking Lot | 24 A.A. Brown Public Library |
| 7 Wheeler Block - Vacant Commercial | 25 Town Hall |
| 8 American Legion | 26 Spears Funeral Home |
| 9 Vacant Commercial | 27 Vacant Lot |
| 10 Richford Community Housing | 28 NOTCH Offices |
| 11 Vacant Commercial | 29 NOTCH Parking Lot |
| 12 Boright Block - 2nd Hand Store | 30 Bank Block - Vacant Commercial |
| 13 Vacant Commercial | 31 Wetherby's Quick Stop |
| 14 Pub/Restaurant | 32 War Memorial |
| 15 Mayhew's Corner Store | 33 TD Bank |
| 16 The Crossing Restaurant | 34 Greenwood Deli & Bakery |
| 17 Old Fire Station/ Historical Society | 35 Memorial Park |
| 18 Main Street Mill | 36 All Saints Catholic Church |

Village Designation Boundary

Commercial

Public

Residential

Open Lot

Senior/Community Housing

0 100 200 300 400 Feet

z:/gis/projects/county/franklin/richford/villagedesignation

Vermont Coordinate System
Transverse Mercator, NAD 83.
For planning purposes only.

Prepared by:
NRPC
75 Fairfield Street
St. Albans, VT 05478
802-524-5958
www.nrpvt.com
September, 2015.

REGIONAL PLANNING COMMISSION